

11 November, 2013

For Immediate Release

## **Modern Equipment Partners with Carpenter Brothers for Foundry Equipment Sales**

Port Washington, WI

**Modern Equipment** in Port Washington, WI announced the assignment of **Carpenter Brothers, Inc.** as their sales partner for the Midwest and North Eastern states starting this Fall. The two companies are celebrating the renewal of a partnership that first started in 1984. CBI will represent Modern's full line of foundry equipment, including JetMelter R brand Stack furnaces, Foundry Ladles, Holding Furnaces and Launder systems. Both companies have serviced the foundry markets across the Midwest and North America for nearly 100 years each.

"We're very happy to reestablish our partnership with Carpenter Brothers, and look forward to the next 100 years for both companies serving the foundry and diecast markets across North America" commented Jim Winistorfer, President of Modern Equipment. Mike Morrison, President of Carpenter Brothers noted that "Carpenter Brothers, Inc. is excited to renew our relationship with Modern Equipment. Modern's name is synonymous with high quality products and innovations that have made our metal casting customers more efficient and competitive in this global marketplace. We look forward to helping our clients "Think Modern" for the next 100 years."

Carpenter Brothers, Inc. will represent Modern Equipment in the states of New York, Pennsylvania, Ohio, Indiana, Michigan, Wisconsin, Minnesota, Iowa, North Dakota, South Dakota, Nebraska and Northern Illinois.

### **CARPENTER BROTHERS, INC. History**

In 1917, Everett and Milton Carpenter formed Foundrymens Supply Company in Milwaukee, WI. After they returned from the First World War in 1919, they incorporated the company into Carpenter Brothers, Inc.

Carpenter Brothers increased the number of manufacturing companies it represented and expanded its sales territory throughout the Midwest. Everett's son, John, joined the company in 1963, and upon Bradley Booth's retirement in 1979, John succeeded him as President of the company. In 2010, Michael J. Morrison succeeded John as President, John maintaining his CEO and Chairman duties.

Today, the company's headquarters are still located in Milwaukee, with branch offices throughout the U.S., out of which twenty-three outside technical salespeople handle sales and technical service coverage. Warehouse locations and additional bulk transfer facilities across the country area allow the company to provide just-in-time and immediate delivery service, resulting in continued growth and success. One of the keys to success at Carpenter Brothers, Inc. is the skilled technical sales engineering staff that serves our customers. Each location also has a full-support customer service/logistics department and inside sales staff that are always ready to help with filling the needs of customers. For more information, visit [www.carpenterbrothersinc.com](http://www.carpenterbrothersinc.com).

J Carpenter Environmental, LLC established in January 2006 as a wholly-owned subsidiary of Carpenter Brothers, Inc. focuses on environmental cleanup products, equipment and processes, addressing heavy metal and hydrocarbon cleanup as well as air and water cleanup challenges. For more information, visit [www.jcarpenterenvironmental.com](http://www.jcarpenterenvironmental.com).

Carpenter Brothers, Inc. is a corporate member of American Foundrymen's Society and holds membership in the Foundry Educational Foundation, Ductile Iron Society, Non-Ferrous Founders' Society, Society of Die Casting Engineers, Casting Industry Suppliers Association, as well as other technical organizations.

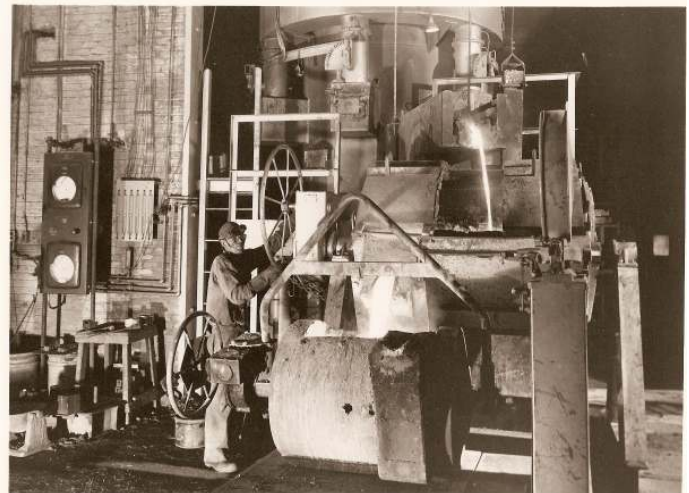
Photo at right: Carpenter Brothers Mining Division Circa 1930's



### MODERN EQUIPMENT History

Modern Equipment started in business in 1919 with a small line of ladles and pouring devices developed by founder Max Goldberg, and was originally known as *The Modern Pouring Device Company*. The business moved into the iron and steel foundry business and introduced the Hot-Blast Cupola to the industry in the 1940's. As aluminum casting began to take center stage in the 1980's, Modern licensed and further developed Stack Melt technology for the North American market, and positioned itself as the market leader for these systems. Modern has engineered customized ladling, handling and melting solutions for customers both in North America and worldwide.

(photo above: Hot Blast Cupola pouring into a Modern Equipment ladle, circa 1940's)



A-1633 — Modern special No. 7 cupola incorporates bed-light-off ports, front slagging spout, detached wind box, individual tuyere downcomers with adjusting dampers and orifice plate for balanced blast. Iron flows from spout, through the forehearth and into the cylindrical pouring ladles. Metal is weighed on a scale with scale mounted on a transfer car. Tubing from downcomers to manometers are mounted at the left on a brick wall.

---

#### **Modern Equipment Company, Inc.**

369 W Western Avenue  
Port Washington, WI 53074  
262-284-9431 TEL

[www.ModernEQ.com](http://www.ModernEQ.com)

[www.AlcoInd.com](http://www.AlcoInd.com)

[www.ThinkModernEquipment.com](http://www.ThinkModernEquipment.com)

For more information contact Jim Winistorfer, President at 262-284-6030

#### **Carpenter Brothers, Inc.**

7100 W. Donges Bay Road  
Mequon, WI 53092  
414-354-6555 TEL

[www.CarpenterBrothersInc.com](http://www.CarpenterBrothersInc.com)

For more information, contact Mike Morrison, President at 414-354-6555