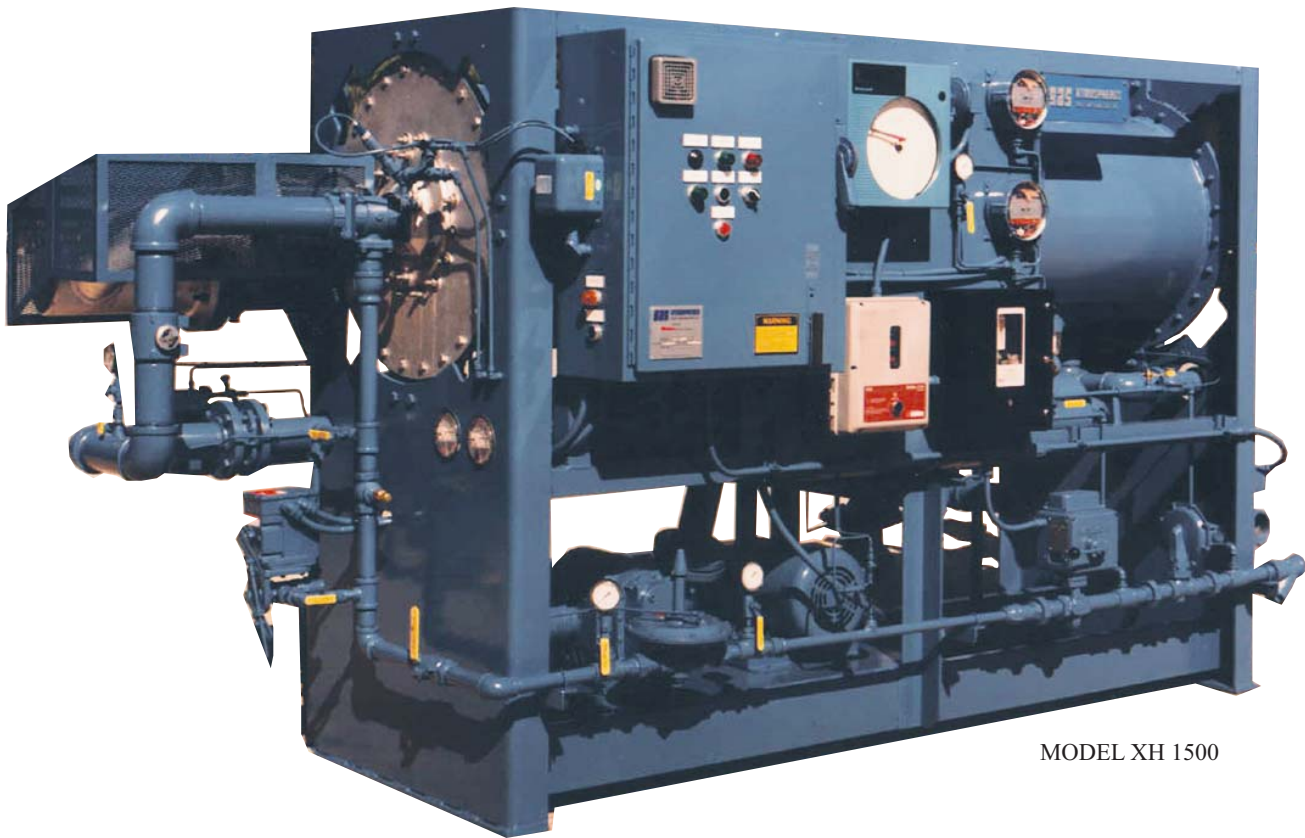


Inert Atmosphere Generators

Lean Exothermic Model XH



MODEL XH 1500

Gas Atmospheres inert gas generators are completely piped, wired and assembled in a “packaged” unit, providing ease of installation and maintenance. The two-pass combustion chamber with a shell-and-tube heat exchanger, provides effective cooling to within 15° F (7° C) of the cooling water temperature. Stainless steel, Type 304, is utilized in construction of the firing chamber, return flue tubes and tube sheets to provide maximum equipment life.

Safety controls are provided for automatic shutdown in event of utility failure.

In addition to the standard features...**Gas Atmospheres** will design and engineer equipment to suit specific applications.

Specifications on standard models are available upon request.

Use of the inert gas generators include:

- * Purging & blanketing of storage tanks
- * Inert gas packaging of foods
- * Bright annealing of non-ferrous alloys
- * Preventive insect or rodent attack in silos
- * Processing requiring LOW OXYGEN in gas.

Gas Atmospheres inert gas generators feature:

- * Fused interlocking door disconnect
- * Water flow switch
- * Ultra-violet flame scanner
- * Low & High & fuel pressure switches
- * Product gas relief regulator
- * Unit-piped and wired as a package
- * NEMA-12 electrical enclosure with NEMA-1 components

* Can be operated on both liquid and gaseous fuels

* Timed purge prior to ignition with “SAFE START” indicator

In addition to the standard features, the following auxiliary equipment is available:

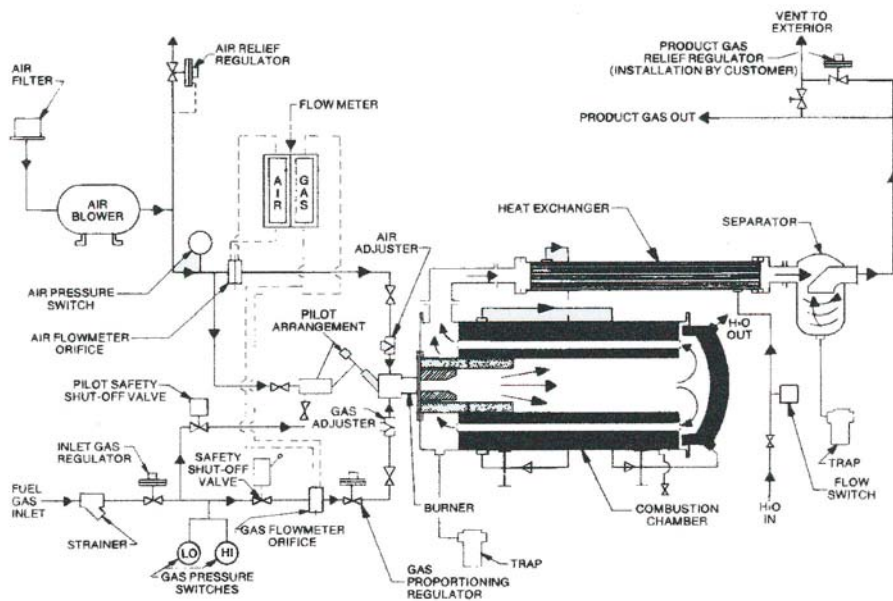
- * Oxygen and combustibles analyzers
- * High pressure compressors
- * Refrigerant & Desiccant gas dryers
- * Heat recovery - Steam or hot water
- * Catalyst purifier to reduce oxygen to less than 10PPM.

Inert Atmosphere Generators Lean Exothermic Model XH

Gas Atmospheres Div.
Modern Equipment Company Inc.

An Alco Industries Company

Schematic Flow



| Model Number | Capacity SCFH | Natural Gas CFH | Propane CFH | Power kWh | Water* GPM | Length | Width | Height | Weight Lbs. |
|--------------|---------------|-----------------|-------------|-----------|------------|--------|--------|--------|-------------|
| XH-100 | 1,000 | 116 | 46 | 1.6 | 9 | 10'-6" | 4'-4" | 5'-8" | 1,900 |
| XH-200 | 2,000 | 232 | 92 | 2.1 | 18 | 10'-6" | 4'-4" | 5'-8" | 2,400 |
| XH-300 | 3,000 | 348 | 138 | 2.1 | 27 | 10'-6" | 4'-4" | 5'-8" | 2,800 |
| XH-400 | 4,000 | 464 | 184 | 2.5 | 34 | 10'-6" | 4'-4" | 5'-8" | 3,200 |
| XH-600 | 6,000 | 696 | 276 | 3.2 | 54 | 11'-0" | 4'-10" | 6'-0" | 3,850 |
| XH-800 | 8,000 | 928 | 368 | 3.2 | 72 | 13'-3" | 5'-0" | 6'-0" | 5,400 |
| XH-1000 | 10,000 | 1160 | 455 | 5 | 90 | 13'-3" | 5'-0" | 6'-0" | 6,350 |
| XH-1500 | 15,000 | 1740 | 690 | 7 | 135 | 13'-9" | 5'-3" | 6'-0" | 8,000 |
| XH-2000 | 20,000 | 2320 | 920 | 7 | 180 | 14'-4" | 5'-3" | 6'-0" | 10,500 |
| XH-3000 | 30,000 | 3480 | 1380 | 12 | 270 | 17'-0" | 7'-0" | 7'-5" | 12,600 |
| XH-4000 | 40,000 | 4650 | 1835 | 20 | 360 | 19'-7" | 7'-0" | 7'-5" | 14,000 |
| XH-5000 | 50,000 | 5800 | 2300 | 20 | 450 | 19'-7" | 7'-0" | 7'-5" | 15,000 |
| XH-6000 | 60,000 | 6950 | 1650 | 23 | 540 | 22'-0" | 8'-0" | 7'-5" | 25,000 |
| XH-8000 | 80,000 | 9300 | 3670 | 31 | 720 | 24'-0" | 10'-0" | 7'-5" | 47,000 |

* Based on 25°F Water Temp. Rise

Larger sizes available upon request.

Dimensions and weights are approximate.

GAS ANALYSIS (Adjustable)

Based on Natural Gas

| Gas | Volume Percentage |
|----------------------|-------------------|
| CO | 0.01 to 5.0% |
| H2 | 0.01 to 5.0% |
| O2 | 0.2 to 0.01% |
| CH4 | 0.0 to 0.2% |
| N2 + CO2 | Balance |
| Delivered Pressure | 14" to 28" W.C. |
| Temperature/Dewpoint | Approx 100° F |

Analysis depends on fuel used.

Optional equipment available to improve gas purity.

*Gas Atmospheres ...
The originators of the
packaged concept in
gas generating systems*



369 W. Western Avenue * P.O. Box 993
Port Washington, WI 53074-0993
(262) 284-9431 Fax: (262) 284-9433
Visit our Website at www.moderneq.com