

Split Mod-Tundish Geared Ladle

The most efficient, economical pour-over inoculation system developed, now in an easily maintained split bottom design

The split bottom shell design allows for more cost effective relining of the lower reaction zone where most of the deterioration occurs.

- Save maintenance time and effort.
- Improve uptime by putting the ladle back to work immediately.
- Easily replaceable bottom sections can be stored, dried and ready to go.

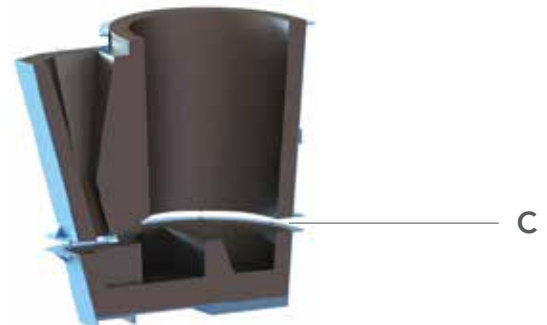
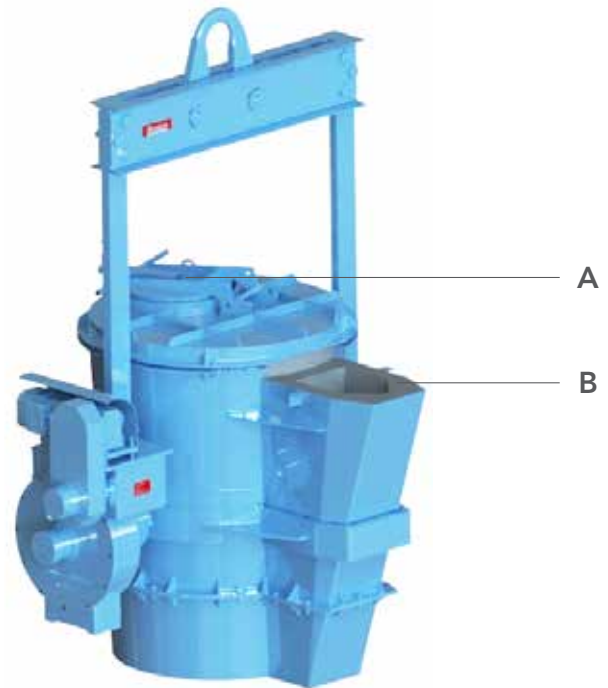
Series 1189 Split

Geared ductile iron treatment ladle.

- A** Hinged alloy cover.
- B** Teapot pouring/receiving spout.
- C** Split bottom shell.

Detailed Features

- Lining form available.



Modern Equipment Co.

369 W Western Avenue
Port Washington, WI 53074

PH: (262) 284-9431
www.moderneq.com

**Modern
Equipment Company**